

# BROOKSIDE

S O F T W A R E

## ProcessStation:

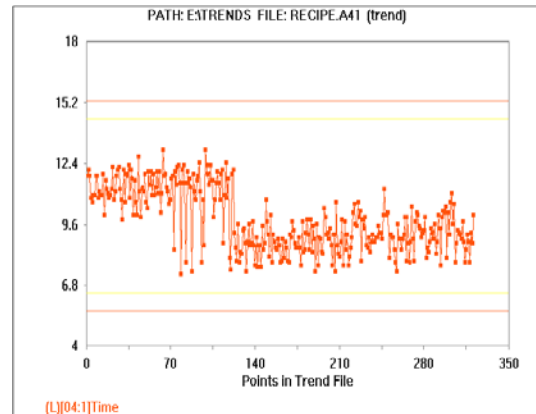
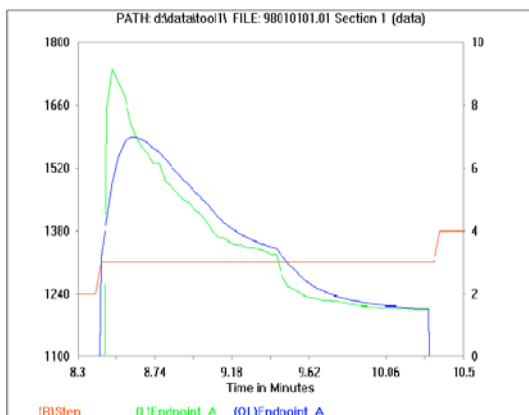
ProcessStation is Brookside Software's Real-Time data collection solution. We collect 30 or more machine parameters at 1 Hz or better. This data can then be stored locally or on a network. Concurrent with data collection and logging, ProcessStation also allows the user to see a real time display of the parameters being collected. With the optional Software Passthru this data collection can also be done while still connected to your factory host system.

## EPT:

EPT is Brookside Software's fault detection software which statistically analyzes the data collected by ProcessStation, as well as running in real time with ProcessStation to perform post wafer analysis. With EPT, the user may specify, to send a warning, pause, or stop the tool. This optional add-in makes the data collected by ProcessStation work in reducing mis-processed wafers.

## DataViewer:

Brookside Software DataViewer is used to view data previously collected by ProcessStation. This highly customizable application can be multiple charts, overlay reference charts, and display trend charts, as well as define default template for viewing different types of charts.



## LamPM:

Brookside Software's LamPM runs automated test suites on Lam's AutoEtch, Rainbow, and TCP systems. LamPM tests gas flows, chamber leaks, and chamber pump down performance. LamPM also runs MFC calibrations checks using multiple set points.

## Service Contracts:

Brookside Software can also provide your facility with service contracts ranging from implementation and troubleshooting, to EPT integration, to custom development included host interfacing and custom modifications.

## Training:

Brookside Software can provide, at your facility training, ranging from beginning user classes, through advanced EPT sessions, each one geared specifically with your users in mind. The best way to leverage your investment is to train your users.

## Specials:

Brookside Software would like to help you customize your fab to your specifications. Have sensors you would like to integrate or a host system you need to interface with? We can do this for you.

Brookside Software

1622 San Carlos Ave., Suite A

San Carlos, CA 94070

(650) 592-4700

Fax: (650) 592-3162

email: [sales@brooksidesoftware.com](mailto:sales@brooksidesoftware.com)

website: <http://www.brooksidesoftware.com>